

STANDARD ARRIVAL CHART INSTRUMENT (STAR) - ICAO

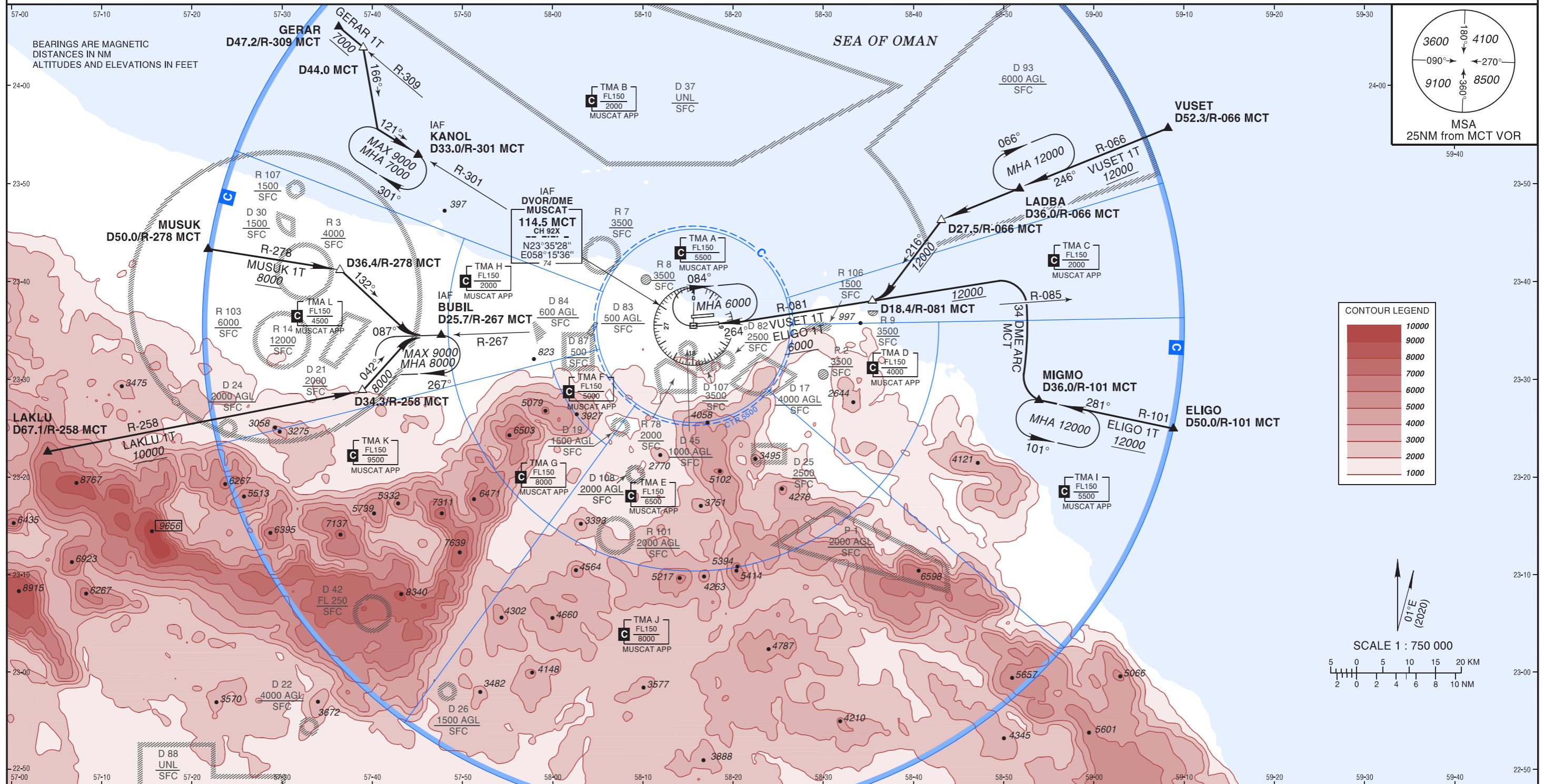
STANDARD ARRIVAL  
CHART INSTRUMENT  
(STAR) - ICAO

AD ELEV 49 FT  
Trans Alt 13000  
Trans Level FL150

ATIS 126.800  
TWR 118.825  
APP/RAD 121.200  
GND 121.800

MUSCAT/Muscat Intl  
OMAN  
RWY 08L

VUSET 1T, ELIGO 1T, LAKLU 1T, MUSUK 1T, GERAR 1T ARRIVAL



STAR	ROUTING
VUSET 1T	Follow R-066 MCT to LADBA, proceed to D27.5/R-066 MCT, then turn LEFT on track 216° to D18.4/R-081 MCT at or above 12000. Turn RIGHT on R-081 MCT to MCT DVOR/DME at or above 6000.
ELIGO 1T	Follow R-101 MCT to MIGMO, then turn RIGHT to follow 34 DME ARC MCT. At R-085 MCT turn LEFT and follow R-081 MCT to D18.4/R-081 MCT at or above 12000. Turn RIGHT on R-081 MCT to MCT DVOR/DME at or above 6000.
LAKLU 1T	Follow R-258 MCT to D34.3/R-258 MCT at or above 10000. Turn LEFT on track 042° to intercept on follow R-267 MCT to BUBIL between 8000 and 9000.
MUSUK 1T	Follow R-278 MCT to D36.4/R-278 MCT at or above 8000. Turn RIGHT on track 132° to intercept on follow R-267 MCT to BUBIL between 8000 and 9000.
GERAR 1T	Follow R-309 MCT to D44.0/R-309 MCT at or above 7000. Turn RIGHT on track 166° to intercept on follow R-301 MCT to KANOL between 7000 and 9000.